

**33 Dellfield Crescent  
Uxbridge, UB8 2EU  
£3,900 PCM**

**Deposit required £4,500**

**Available date 6th July  
2026**

**\*\*STUDENTS\*\***

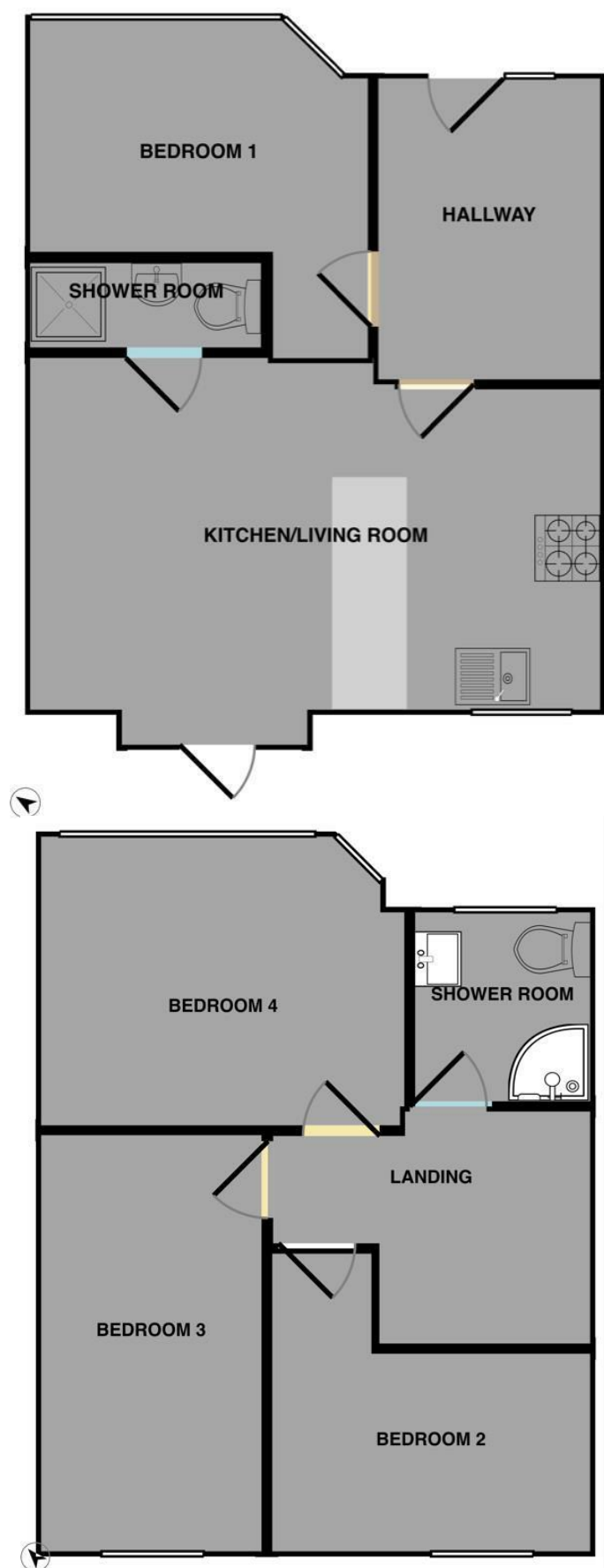
6 BEDROOMS NEWLY REFURBISHED- AVAILABLE 06/07/2026

The rental payments equate to approx £650 per person per month or £150 per person per week excluding bills.

UniHomes offer a bills package for £22 per person per week. (Incl Gas, Electric, Water, TV licence and internet) which can be organised through Nupad initially.

Nupad offer this excellent newly refurbished SIX bedroom house comprising of SIX FURNISHED BEDROOMS , a LOUNGE area, TWO SHOWER ROOMS, KITCHEN, intercom system for each bedroom, Bike parking, off street PARKING, rear GARDEN.

The property is ideal for students at Brunel University as it's close to campus. It is also nearby to direct bus routes to Uxbridge Town Centre, Heathrow, Stockley Park and the local underground station, which provides further access to Central London., Heathrow, Stockley Park and the local underground station, which provides further access to Central London.



Energy Efficiency Rating		
	Current	Potential
Very energy efficient - lower running costs		
(92 plus) <b>A</b>		<b>84</b>
(81-91) <b>B</b>		
(69-80) <b>C</b>		
(55-68) <b>D</b>		
(39-54) <b>E</b>		
(21-38) <b>F</b>		
(1-20) <b>G</b>		
Not energy efficient - higher running costs		
<b>England &amp; Wales</b>		
EU Directive 2002/91/EC		

Environmental Impact (CO <sub>2</sub> ) Rating		
	Current	Potential
Very environmentally friendly - lower CO <sub>2</sub> emissions		
(92 plus) <b>A</b>		<b>84</b>
(81-91) <b>B</b>		
(69-80) <b>C</b>		
(55-68) <b>D</b>		
(39-54) <b>E</b>		
(21-38) <b>F</b>		
(1-20) <b>G</b>		
Not environmentally friendly - higher CO <sub>2</sub> emissions		
<b>England &amp; Wales</b>		
EU Directive 2002/91/EC		